

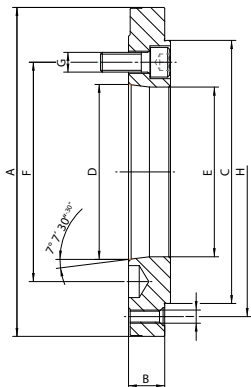


Adapter plates

# Adapter plates

A09

Short-taper adapter plate for ISO 702-1 (DIN 55026), finished on both sides (without mounting bolts)

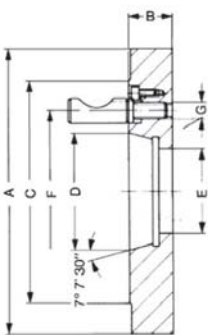


Item no.	Ø A mm	Taper	B mm	C mm	D mm	E mm	F mm	G	H mm	I	Weight approx. kg
182900 ▲	140	3	17	95	53,975	51,20	70,60	M10	108/120	3x/6x M8	1,4
182902 ▲	140	4	21	95	63,513	61,00	82,60	M10	108/120	3x/6x M8	1,55
182904 ▲	140	5	21	95	82,563	79,60	104,80	M10	108/120	3x/6x M8	1,4
182906 ▲	165	6	25	95	106,375	80,00	133,40	M12	108/120	6x M8	2,7
182908 ▲	160	4	18	125	63,513	61,00	82,60	M10	140	6x M10	2,5
182910 ▲	160	5	18	125	82,563	79,60	104,80	M10	140	6x M10	2,2
182912 ▲	165	6	25	125	106,375	103,20	133,40	M12	140	6x M10	2,5
182914 ▲	210	8	32	125	139,719	100,00	171,40	M16	140	6x M10	5,8
182916 ▲	200	4	18	160	63,513	61,00	82,60	M10	176	6x M10	5
182918 ▲	200	5	18	160	82,563	79,60	104,80	M10	176	6x M10	3,9
182920 ▲	200	6	22	160	106,375	103,20	133,40	M12	176	6x M10	4,1
182922 ▲	210	8	32	160	139,719	136,20	171,40	M16	176	6x M10	5
182924 ▲	250	5	21	200	82,563	79,00	104,80	M10	224	3x M12	7,7
182926 ▲	250	6	26	200	106,375	103,00	133,40	M12	224	3x M12	8,7
182928 ▲	250	8	30	200	139,719	136,20	171,40	M16	224	3x M12	7,3
182930 ▲	315	6	24	260	106,375	103,00	133,40	M12	286	3x M12	14,5
182932 ▲	315	8	30	260	139,719	136,00	171,40	M16	286	3x M12	16
182934 ▲	315	11	42	260	196,869	192,90	235,00	M20	286	3x M12	16,2
182936 ▲	400	6	32	330	106,375	103,00	133,40	M12	362	3x M16	30,8
182938 ▲	400	8	32	330	139,719	136,00	171,40	M16	362	3x M16	29
182940 ▲	400	11	38	330	196,869	192,90	235,00	M20	362	3x M16	29,7
182942 ▲	400	15	49	330	285,775	281,50	330,00	M24	362	3x M16	24,5
182944 ▲	500	8	36	420	139,719	136,20	171,40	M16	458	6x M16	53,1
182946 ▲	500	11	36	420	196,869	192,90	235,00	M20	458	6x M16	49
182948 ▲	500	15	46	420	285,775	281,50	330,00	M24	458	6x M16	49,5
182950 ▲	630	11	42	545	196,869	192,90	235,00	M20	586	6x M16	100
182952 ▲	630	15	43	545	285,775	281,50	330,00	M24	586	6x M16	90
182954 ▲	630	20	42	545	412,775	408,00	463,60	M24	586	6x M16	63

Adapter plates

A09

Short-taper adapter plate ISO 702-2 (DIN 55029) and ASA B 5.9 D1, Camlock

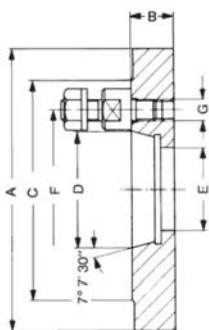


Item no.	Ø A mm	Taper	Inch	B mm	C mm	D mm	E mm	F mm	G	Weight approx. kg
319673 ▲	125	3	5	27	92,1	53,975	40	70,66	7/16 - 20	2,3
319674 ▲	125	4	5	28	117,5	63,513	40	82,55	7/16 - 20	2,2
319675 ▲	160	3	6 ¼	27	92,1	53,975	40	70,66	7/16 - 20	3,9
319676 ▲	160	4	6 ¼	28	117,5	63,513	40	82,55	7/16 - 20	3,9
319677 ▲	160	5	6 ¼	31	146	82,563	40	104,8	½ - 20	4,6
319678 ▲	200	4	8	28	117,5	63,513	50	82,55	7/16 - 20	6,4
319679 ▲	200	5	8	31	146	82,563	50	104,8	½ - 20	7,4
319680	200	6	8	36	181	106,375	50	133,4	5/8 - 18	8,4
319681 ▲	250	4	1	28	117,5	63,513	61	82,55	7/16 - 20	10,2
319682 ▲	250	5	10	31	146	82,563	63	104,8	½ - 20	11,6
319683	250	6	10	36	181	106,375	63	133,4	5/8 - 18	13,3
319684	250	8	10	39	225,4	139,719	63	171,4	¾ - 16	13,8
319685 ▲	315	5	12 ¼	31	146	82,563	63	104,8	½ - 20	18,6
319686 ▲	315	6	12 ¼	36	181	106,375	63	133,4	5/8 - 18	21,5
319687 ▲	315	8	12 ¼	39	225,4	139,719	63	171,4	¾ - 16	22,6
319688 ▲	315	11	12 ¼	45	298,4	196,869	63	235	7/8 - 14	25,2
319689 ▲	400	6	15 ¾	36	181	106,375	63	133,4	5/8 - 18	35
319690 ▲	400	8	15,75	39	225,4	139,719	63	171,4	¾ - 16	37,2
319691 ▲	400	11	15,75	45	298,4	196,869	63	235	7/8 - 14	42
319692 ▲	400	15	15,75	50	403	285,775	63	330,2	1 - 14	42,1
319693 ▲	500	8	20	41	225,4	139,719	80	171,4	¾ - 16	62
319694 ▲	500	11	20	45	298,4	196,869	80	235	7/8 - 14	67
319695 ▲	500	15	20	50	403	285,775	80	330,2	1 - 14	68

Further sizes and designs, such as ISO 702-1, available on request!

# Adapter plates

A09  
Short-taper adapter plate ISO 702-3 (DIN 55027) and 55022 with studs and locknuts



Item no.	Ø A mm	Taper	Inch	B mm	C mm	D mm	E mm	F mm	G	Weight approx. kg
319650 ▲	125	3	5	19	102	53,975	40	75	M10	2,3
319651 ▲	125	4	5	19	112	63,513	40	85	M10	2,2
319652 ▲	160	3	6 ¼	21	102	53,975	40	75	M10	3,9
319653 ▲	160	4	6 ¼	21	112	63,513	40	85	M10	3,9
319654	160	5	6 ¼	21	135	82,563	40	104,8	M10	4,6
319655 ▲	200	4	8	21	112	63,513	50	85	M10	6,4
319656	200	5	8	21	135	82,563	50	104,8	M10	7,4
319657	200	6	8	23	170	106,375	50	133,4	M12	8,4
319658 ▲	250	4	1	21	112	63,513	61	85	M10	10,2
319659 ▲	250	5	10	21	135	82,563	63	104,8	M10	11,6
319660	250	6	10	23	170	106,375	63	133,4	M12	13,3
319661	250	8	10	26	220	139,719	63	171,4	M16	13,8
319662 ▲	315	5	12 ¼	26	135	82,563	63	104,8	M10	18,6
319663 ▲	315	6	12 ¼	26	170	106,375	63	133,4	M12	21,5
319664	315	8	12 ¼	26	220	139,719	63	171,4	M16	22,6
319665 ▲	315	11	12 ¼	33	290	196,869	63	235	M20	25,2
319666 ▲	400	6	15 ¾	31	170	106,375	63	133,4	M12	35
319667 ▲	400	8	15,75	31	220	139,719	63	171,4	M16	37,2
319668 ▲	400	11	15,75	31	290	196,869	63	235	M20	42
319669 ▲	400	15	15,75	33	400	285,775	63	330,2	M24	42,1
319670 ▲	500	8	20	41	220	139,719	80	171,4	M16	62
319671 ▲	500	11	20	41	290	196,869	80	235	M20	67
319672 ▲	500	15	20	41	400	285,775	80	330,2	M24	68

Further sizes and designs, such as ISO 702-1, available on request!



Notes

Notes